



**肇庆市投资环境推介**  
**Introduction of Investment Climate in Zhaoqing**  
**环保产业**  
**Environmental Protection Industry**

中国·广东·肇庆  
Zhaoqing, Guangdong, China

# 目 录

DIRECTORY

肇庆概述

肇庆新区、鼎湖区概况  
Profile of Zhaoqing New Area and Dinghu District

肇庆新区、鼎湖区环保产业园推介





## ● 城市概况 City Overview

肇庆，位于中国广东省中西部，广佛肇经济圈的重要成员，是珠三角连通大西南及东盟经济区的门户城市。

As a crucial member of Guangzhou-Foshan-Zhaoqing Economic Circle, Zhaoqing, located in the middle west of Guangdong Province, is a gateway city connecting Pearl River Delta with Southwest China and ASEAN Economic Zone.



- 国家历史文化名城  
A National Historical and Cultural City
- 中国砚都  
An Inkstone Capital of China
- 国家卫生城市  
A National Hygienic City
- 国家环保城市  
A National Environmental Protection City
- 国家园林城市  
A National Garden City
- 中国优秀旅游城市  
An Excellent Tourism City of China
- 中国投资环境百佳城市  
One of the 100 Best Investment Climate Cities of China
- 中国十佳最具特色文化竞争力城市  
One of the 10 Most Distinctive Cultural Competitiveness Cities of China



## ● 区位交通 Location and Transportation

珠三角世界级城市群的重要组成部分

An important part of world-class city cluster in Pearl River

Delta

珠三角连接大西南及东盟经济区的枢纽门户

A gateway city connecting Pearl River Delta with Southwest

China and ASEAN Economic Zone



### 陆 Land Transport :

广肇高速  
Guangzhou-Zhaoqing expressway  
二广高速  
Erlianhaote-Guangzhou expressway  
广佛肇高速  
Guangzhou-Foshan-Zhaoqing expressway  
怀阳高速  
Huaiyang expressway  
珠三角环线高速  
Pearl River Delta Ring expressway



### 水 : Water Transport

西江“黄金水道”常年  
5000吨轮船通达江海。  
5000-ton vessels pass  
through the “golden  
waterway” - Xijiang River all  
year round



### 铁 : Rail Transport

南广高铁  
Nanning-Guangzhou high-speed railway  
贵广高铁  
Guiyang-Guangzhou high-speed railway  
广茂铁路  
Guiyang-Guangzhou high-speed railway  
广佛肇城际轨道  
Guangzhou-Foshan-Zhaoqing intercity light rail



### 空 : Air Transport

距广州新白云机场  
仅1小时车程  
One hour's drive  
to Guangzhou New  
Baiyun International  
Airport



# 目 录

DIRECTORY

肇庆概述

肇庆新区、鼎湖区概况  
Profile of Zhaoqing New Area and Dinghu District

肇庆新区、鼎湖区环保产业园推介



# ● 走进新区、鼎湖区 Approaching Zhaoqing New Area and Dinghu District

肇庆新区、鼎湖区位于肇庆市中东部，毗邻广州，是广东探索新型城市化进程的先行区和试验区。作为广东省重大创新发展平台，两区坚持“低碳绿色”的发展理念，高度融合发展。凭借优越的自然环境与低冲击的开发模式，于2013年被中国住房和城乡建设部评为“国家绿色低碳发展示范城区”。

Zhaoqing New Area and Dinghu District, located in the middle east of Zhaoqing adjoining to Gunagzhou, are pioneers and pilot zones for exploring the new urbanization in Guangdong. As a major innovation and development platform in Guangdong, the two districts adhere to the development concept of “Green and Low-Carbon Development” and strictly put it into practice. In advantage of the excellent natural environment and the low-impact development mode, Zhaoqing New Area was awarded as a “National Green-ecological Demonstration Zone” in 2013 by Ministry of Housing and Urban-Rural Development of China.





## “两区”建设条件 Construction Condition

良好的地缘优势：交通便捷

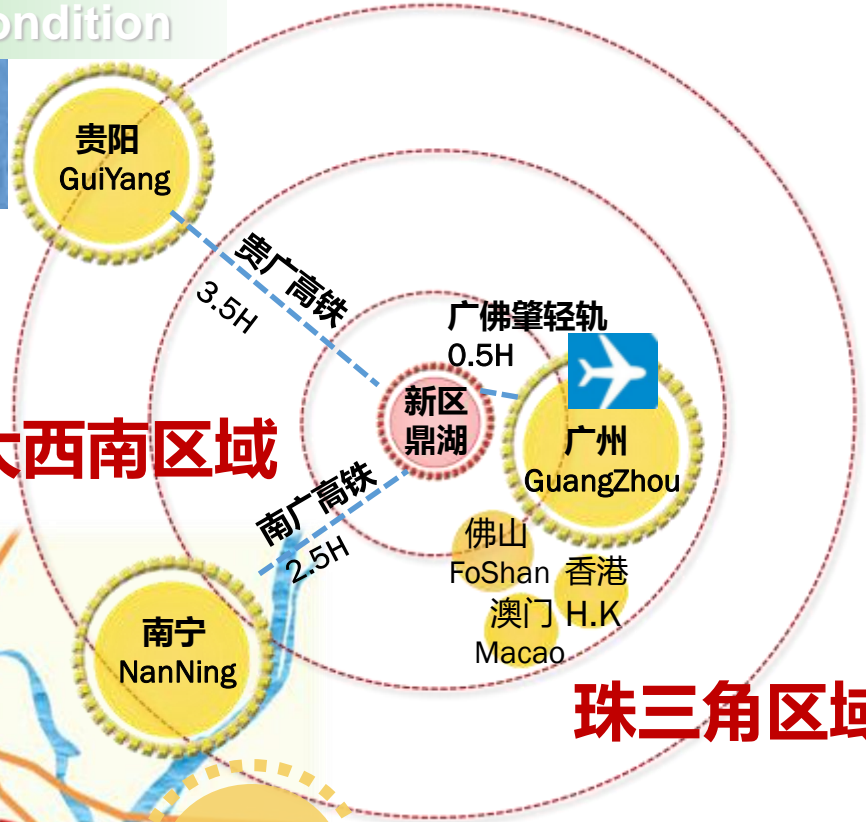
四条高速、两条高铁、一条城际轨道、一条黄金水道、一个内河港口构建出便捷、完善的交通系统。

Four Expressways, two high-speed railways, one intercity light rail, one golden waterway and one inland port compose a convenient and integrated transport system.

大西南区域

珠三角区域

东盟 ASEAN 东盟区域



# ● “两区”建设条件 Construction Condition

良好的地缘优势：环境优越

**【背靠名山】**被誉为“北回归线上绿宝石”的鼎湖山，是国家4A级风景名胜区，离城市最近的原始森林，第一个国家级自然保护区，被联合国教科文组织定为“人与生物圈”保护区。山内空气中含负离子达10.56万个/CM<sup>3</sup>，人称“天然大氧吧”。

[Backed by famous mountains] Known as “an emerald on the Tropic of Cancer”, Dinghu Mountain is a National 4A-Class Scenic Spot, a primeval forest closest to the city and the first national nature reserve rated as a “Man and Biosphere” (MAB) nature reserve by United Nations Educational Scientific and Cultural Organization (UNESCO). Since the air inside contains 105,600 negative ions per cubic centimeter, Dinghu Mountain is also honored as a “natural oxygen bar”.

**【环拥名湖】**九龙湖碧波粼粼，山林幽密，被誉为“都市后花园”。

[Surrounded by a famous lake] Jiulong Lake with its green rippling waves and the dense forest around is named as “Back Yard Garden of the city”

**【前瞰名江】**有“黄金水道”之美誉的西江，江水荡漾，流经全区。

[A famous river in the front] Known as “Golden Waterway”, Xijiang River flows through the whole New Area.

**【南临宝岛】**广东省最大的江心岛——砚洲岛，碧水银滩，椰林树影，是旅游度假、水上娱乐的首选之地。

[a precious island in the south] The largest central island in Guangdong – Yanzhou Island with turquoise water lapping at a white sandy beach and green trees giving welcome shade, is your first choice for vacation and aquatic recreation.



名山



名湖



名江



宝岛





# “两区”建设条件 Construction Condition

## 广阔的发展环境：丰富的土地资源及开放的政策环境

## Broad Space for Development: Rich Land Resources and Open Policies

### ■ 丰富的土地资源 Rich Land Resources

肇庆新区、鼎湖区土地平坦，沃野千里，开发强度不足10%，是珠三角仅存的、交通便利的连片生态平原绿洲。

Zhaoqing New Area and Dinghu District with their huge areas of flat lands and low development intensity less than 10% are the remaining ecological plain oases with convenient transportation in Pearl River Delta.



### ■ 开放的政策环境 Open Policies

#### ● 国家绿色生态示范城区

##### National Green-ecological Demonstration Zone

新区、鼎湖区的低碳绿色新城建设新模式在全国新城建设中将具有重要示范意义。

The new development mode of Green and Low-Carbon New City implemented in Zhaoqing New Area and Dinghu District will play a significant demonstration role in the construction of new cities all over the country.

#### ● 列入省重点发展创新平台

##### Rated as a major innovation and development platform in Guangdong

新区、鼎湖区将因此获得更广泛的政策支持与更开阔的发展空间。

Zhaoqing New Area and Dinghu District will be granted a wider range of policy support and broader space for development because of that.

#### ● 享有市级经济管理权限

##### Enjoys municipal-level authority in economy management

市委、市政府赋予新区自主发展权、改革权、创新权，实施政策、项目倾斜。

The CCP municipal committee and municipal government has provided Zhaoqing New Area with the rights of autonomous development, reform and innovation to implement preferential policies.

#### ● 实行政策创新

##### To Implement Policy Innovation

新区、鼎湖区以实行政策创新为先导，已开展了新型城镇化综合配套改革及出台了人才引进、产业发展等一些列扶持措施（包括现代服务业、高端装备制造业等）。

Guiding by the spirit of implementing policy innovation, Zhaoqing New Area and Dinghu District have enacted comprehensive supplementary reforms for new-type urbanization and such a series of supportive measures as talent introduction, industrial development (Including modern service industry, High-end equipment manufacturing industry, etc.)

## ● “两区”建设条件 Construction Condition

### 专业技术型人才资源丰富 Abundant Technical Talent

**引进和培养高层次人才的一系列人才激励保障措施**

**A series of stimulations and safeguards to introduce and cultivate high-level talents**

**为高精尖人才提供“一站式”绿色通道服务**

**To provide “one-stop” green channel service for highly sophisticated talents.**

**广东省职业技术教育培训基地**

**Guangdong Vocational and Technical Education Training Base**

➤ **30多所大中专院校**

**Over 30 technical secondary schools and junior colleges**

➤ **在校学生近20万人**

**Nearly 200000 students**

➤ **每年培养的高素质技能型人才近5万人**

**Cultivating over 50000 talents with high quality and professional skills every year**





## “两区”建设条件 Construction Condition

行政服务优质高效  
Quality and Efficient Administrative Service

行政审批制度改革走在全省前列

Taking the lead in the reform of administrative examination and approval system in Guangdong province

1. 行政审批事项精简率达到43%

Simplification rate of administrative examination and approval reaches 43%

2. 100%网上审批和并联审批

100% Online and parallel examination and approval



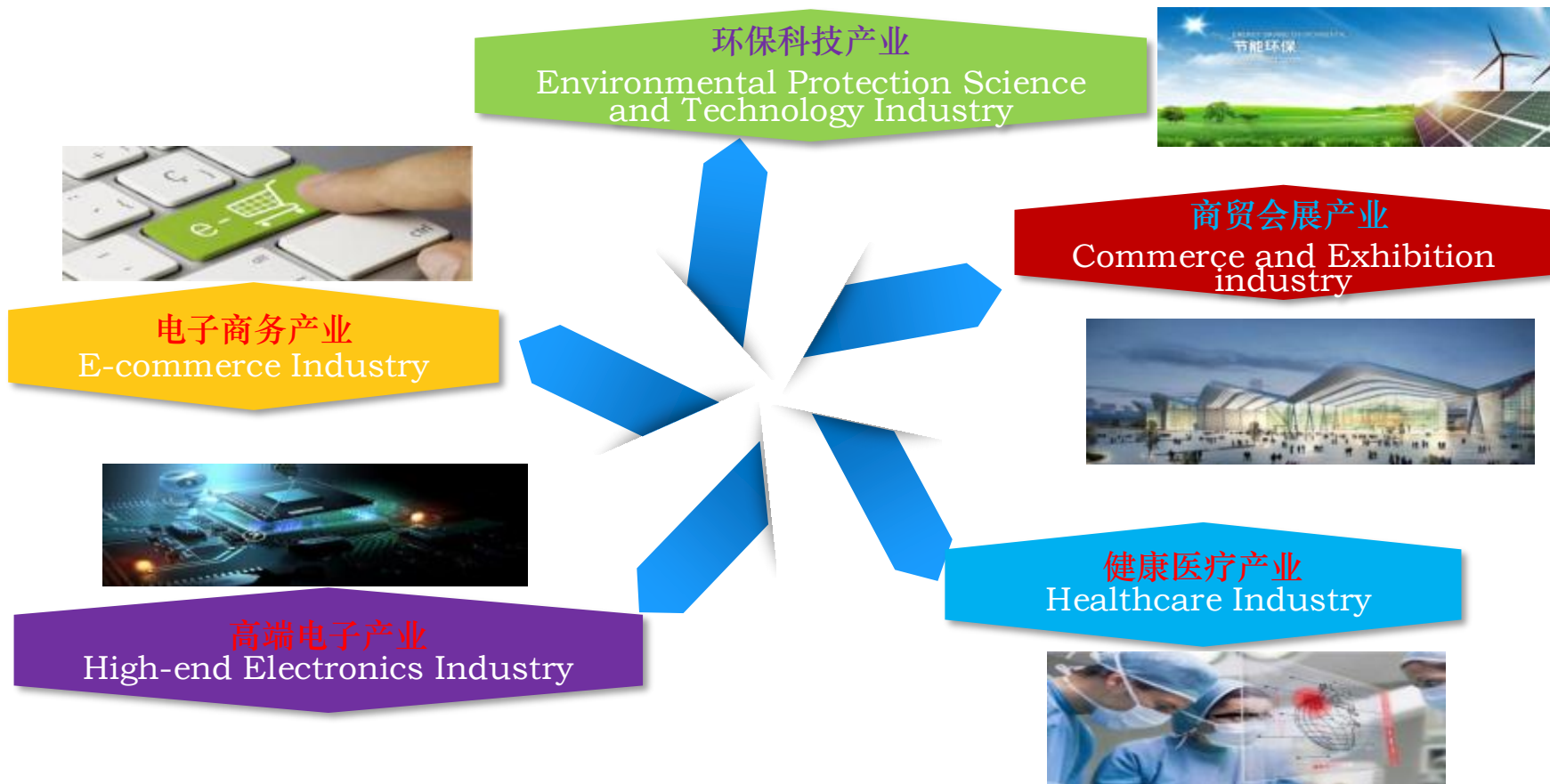
## “两区”产业布局 Industrial Layout

打造五个投资百亿产业组团

To build five industrial clusters with investment over billions of RMB

新区重点发力打造五个投资百亿产业组团，营造投资洼地效应。力争引资超五百亿助推新区搭建现代先进产业集聚发展平台，蓄力打造珠三角经济发展的新兴增长极。

Zhaoqing New Area has devoted itself to building five industrial clusters with investment over billions of RMB for the lowland effect of investment. Moreover, Zhaoqing New Area has made great efforts to attract investment over 50 billion Yuan to set up a modern development platform of advanced industries so as to foster the new economic growth points of Pearl River Delta.





# 目 录

## DIRECTORY

肇庆概述

肇庆新区、鼎湖区概况  
Profile of Zhaoqing New Area and Dinghu District

肇庆新区、鼎湖区环保产业园推介  
Introduction of Environmental Protection Industrial Parks in  
Zhaoqing New Area and Dinghu District



## 1. 肇庆市发展环保产业的决心和力度空前

The determination and strength of developing environmental protection industry is unprecedentedly firm and strong.

肇庆市为了抢抓机遇，大力发展环保产业，打造珠江西岸先进装备制造产业高地，提出以“市场换投资”的发展模式：

In order to seize the opportunity, Zhaoqing vigorously develops industries of environmental protection, creates a highland of advanced equipment manufacturing industry in the west bank of Pearl River, and creatively puts forward with a new development pattern called “Exchange Market for Investment” :

- 以扩大先进环卫装备、先进垃圾处理设备的市场需求，打造环保先进装备产业集群；  
To expand the market demand of advanced environmental sanitation equipments and garbage disposal equipments, so as to build an advanced manufacturing industrial cluster for environmental protection.
- 以加强清洁能源的利用，推进清洁能源研发制造产业发展；  
To improve the utilization of clean energy, in order to propel the development of the clean energy manufacturing industry
- 以拓展我市水体治理项目市场，打造水体治理产业集群；  
To build a wastewater treatment industrial cluster by expanding the market for our projects of wastewater treatment.
- 以肇庆新区5000亩环保科技城项目为龙头的产业发展载体，打造环保产业高地。  
To create a new highland of environmental protection industry, in reliance on the environmental protection science and technology city as a leading industry with a planned area of 5000mu in Zhaoqing New Area





## ● “两区”环保产业园推介 Introduction of Environmental Protection Industrial Parks

### 2.目标：打造环保产业集群

### 2.Target: To build an environmental protection industrial cluster



#### Technology Platform

To build a first-class third-party service base of the country, containing academician workstations, innovative incubation platforms, monitoring and inspection centers, environmental consultancies, etc.

#### Equipment Manufacturing

To establish a high-end equipment manufacturing base by introducing state-owned enterprises and listed companies of environmental protection industry

#### Advanced Model

To integrate famous planning and design institutes, top-level research institutes, large-scale state-owned enterprises and listed companies, so as to create typical engineering projects with both prospective modes and exemplary technologies.

● “两区”环保产业园推介 Introduction of Environmental Protection Industrial Park

3.国内环保龙头企业开始陆续进驻肇庆

3. Domestic leading environmental protection enterprises have continuously moved in Zhaoqing.

启迪控股及其关联企业已经率先战略布局肇庆，将投资超100亿元开发建设环保科技城。

Tus-Holdings and its relevant companies, which have taken the lead in Zhaoqing, are going to invest over 10 billion Yuan in the exploitation and construction of Environmental Protection Science & Technology City.



肇庆市人民政府 启迪控股股份有限公司  
战略合作协议签约仪式



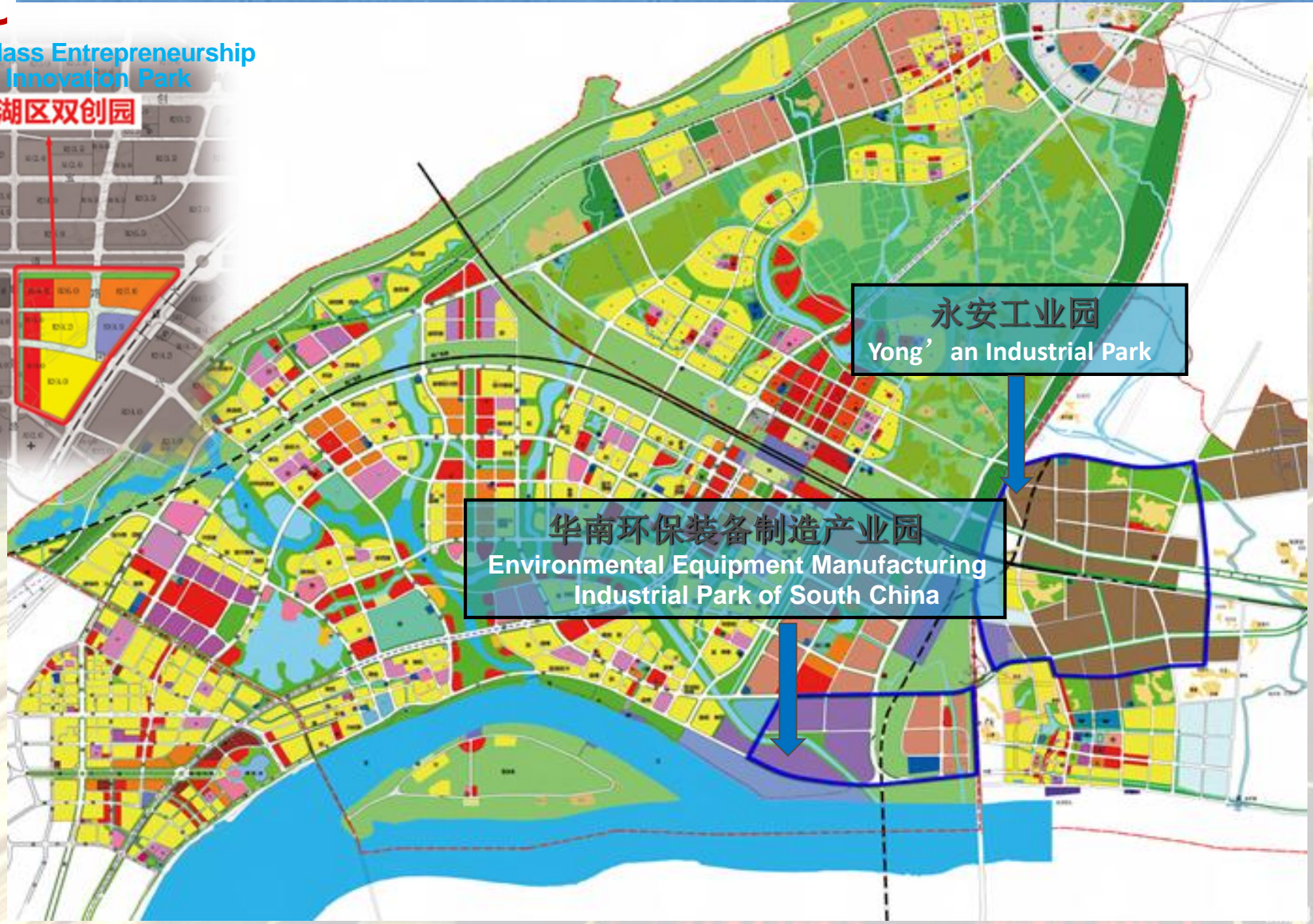


● “两区”环保产业园推介 Introduction of Environmental Protection Industrial Park

4.环保产业发展规划 Development Plan of Environmental Protection Industry

Dinghu Mass Entrepreneurship  
and Innovation Park

鼎湖区双创园



永安工业园

Yong'an Industrial Park

华南环保装备制造产业园  
Environmental Equipment Manufacturing  
Industrial Park of South China



## ● “两区”环保产业园推介 Introduction of Environmental Protection Industrial Park

### (1) 华南环保装备制造产业园

Environmental Equipment Manufacturing Industrial Park of South China

肇庆新区规划5000亩用于发展环保科技产业，其中在总部经济组团规划500亩用于发展集总部经济、办公、教育、金融、商业、居住、公共服务等功能的科技产业集群，在临港组团规划4500亩用于发展集研发、制造先进节能环保装备的产业园。

The total planned area for the development of environmental protection science and technology industry in Zhaoqing New Area is 5000mu, 500mu of which is applied to make it a science and technology cluster with functions such as headquarters economy, office, education, finance, business, residence, public service, etc in the headquarters economic zone, and the rest of which is applied to build an industrial park for R&D and manufacture of advanced energy conservation and environmental protection equipments in the harbor industrial zone.





## ● “两区”环保产业园推介 Introduction of Environmental Protection Industrial Park



### (2) 鼎湖双创园 Dinghu Mass Entrepreneurship and Innovation Park

高层次人才“双创”园涵盖院士工作站、国家“千人计划”创业中心、“肇梦空间”创新孵化中心和总部经济多种形态，将成为肇庆市高层次人才创新创业新高地。

“Mass Entrepreneurship and Innovation” Park with high-level talents, covering an academician workstation, a national “1000 Youth Talents Plan” entrepreneurship center, a “Dream Space in Zhaoqing” innovative incubation center and various forms of headquarters economy, will become a new entrepreneurship and innovation highland of Zhaoqing with multiple high-level talents in it.

# “两区”环保产业园推介 Introduction of Environmental Protection Industrial Park

## (3) 永安工业园 Yong'an Industrial Park

- 永安工业园近期规划面积约为7000亩，中期扩展到15000亩，远期扩展到25000亩。

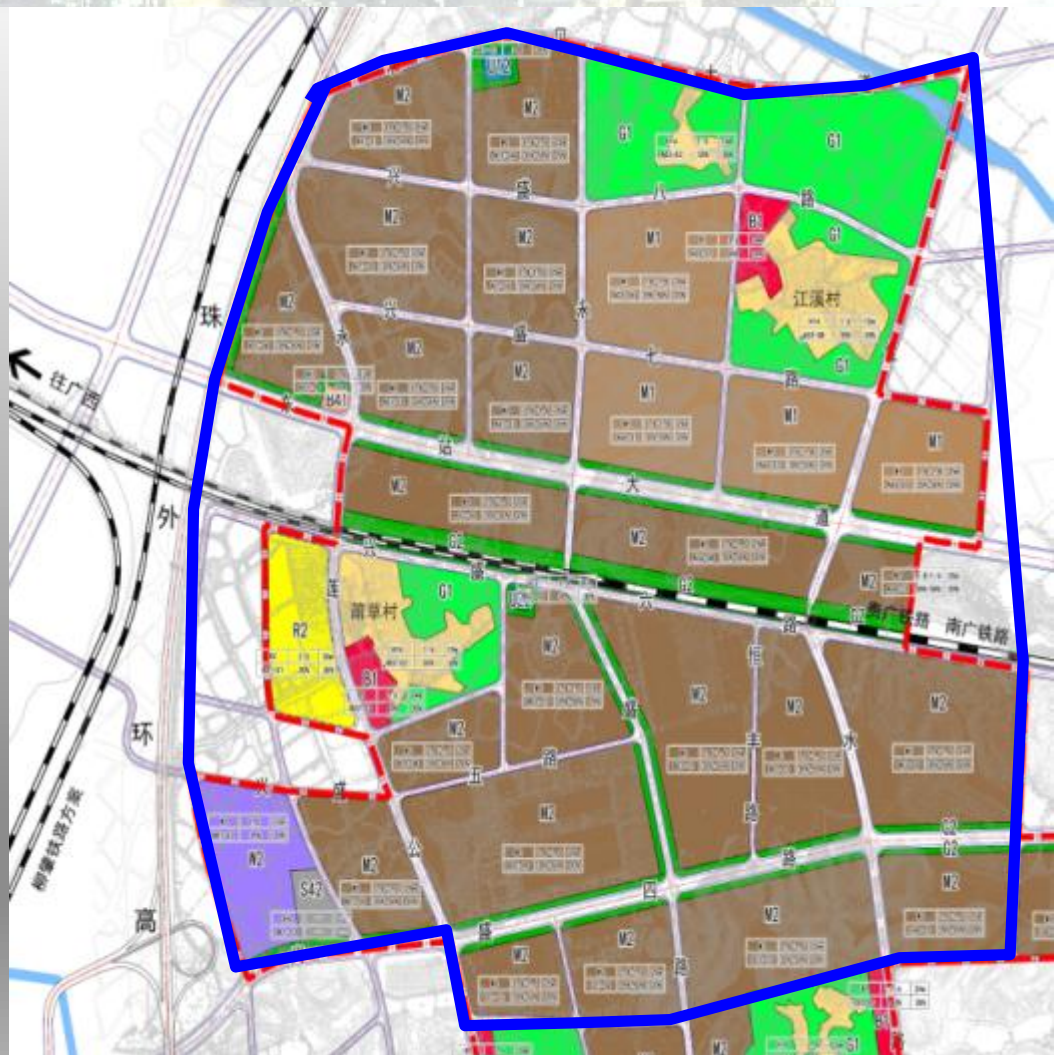
The planned area of Yong'an Industrial Park is now about 7000mu, which will expand to 15000mu in the medium term and 25000mu in the long term.

- 园区规划着重发展现代先进装备制造、金属加工产业、汽配产业、电子信息产业、生物制药产业等产业。

The park is planning to focus on modern advanced equipment manufacturing industry, metal processing industry, auto parts industry, electronic information industry, biological pharmacy industry, etc.

- 园区内供水、供电、排水、排污、通信等基础设施配套完善。

The park provides mature infrastructures for water supply, power supply, water drainage, pollution discharge, communication, etc.





肇庆  
Z  
Q



# 欢迎来肇庆投资兴业

## Welcome to make investment in Zhaoqing

中国 · 广东 · 肇庆  
Zhaoqing, Guangdong, China